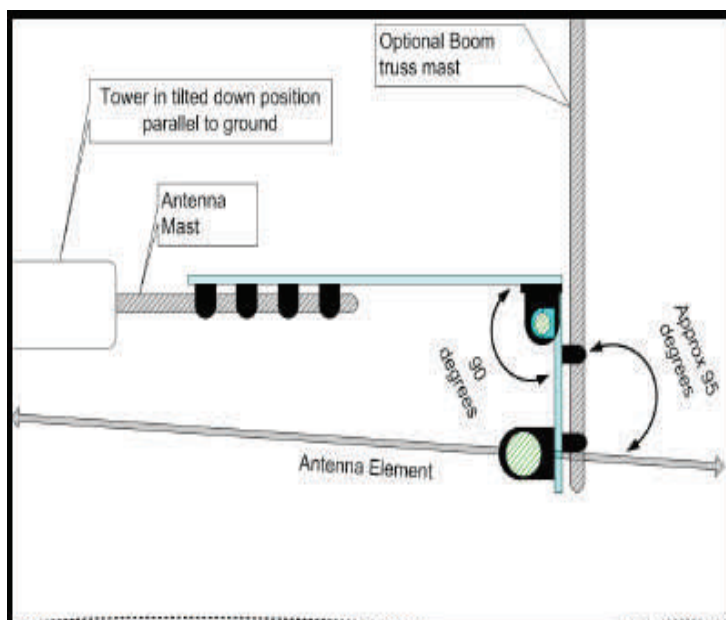


Installation Instructions

- 1) Mast mount—Install the mast plate using (4) 2 Inch U-Bolts. See Figure 1. Go to Step 3
- 2) Direct Rotor Mount—Adjust rotor plates as shown in figure 2. Mark and drill the mast plate. Bolt mast plate to rotor.
- 3) Optional—Install the boom truss support mast to the boom plate using (2) 2 inch U-Bolts
- 4) Install the antenna to the boom plate using (4) 2 ½ inch U-Bolts. **Do not tighten yet**
- 5) Rotate the boom so the angle between the boom plate and element is approximately 80 degrees. See FAQs for more details. Tighten the U-Bolts. See figure 1.
- 6) Complete any antenna setup and wiring as needed
- 7) Tilt the tower to vertical and verify the elements are parallel to the ground. Repeat step 5 and adjust if necessary.

Figure 1



Installation v1

Figure 2

